

Safeguard your time on the water...



Signal Filters™ gives ALERT on your display!

Early Detection with Patented "Probe-in-Can"™ Technology

Provide maximum protection of your engines by effectively removing water AND contaminations from the fuel.

- NMEA 2000 Network – Plug and play.
- Water-in-fuel alerts sent to your multi-function display (MFD).
- 10 micron fuel filter.
- ABYC H-24 Fire Test Certified: Mount anywhere.
- Electronics in stainless steel head: No extras to purchase.
- Fuel flow rated up to: 180 GPH / 680 LPH



Signal Filters™ N2K is available in 3 filter lengths.

4" Filter



6" Filter



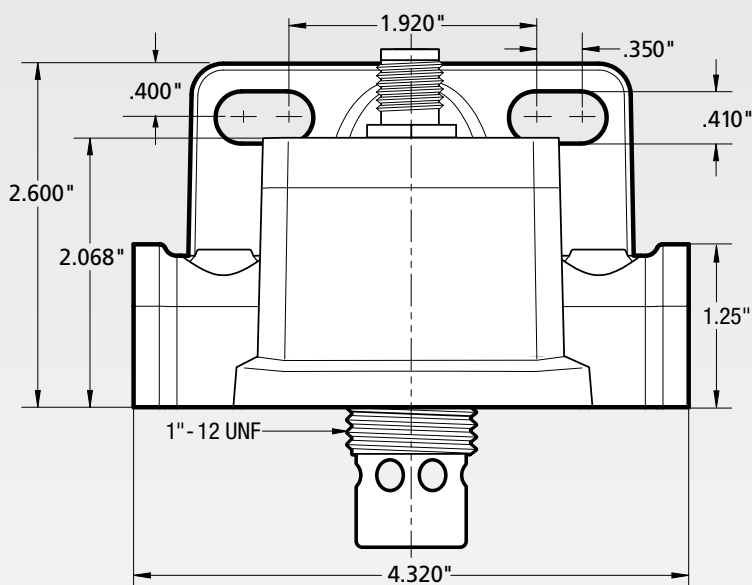
8" Filter
(with drain plug)



Signal Filters™ manufactures units based on filter media type and can size. The larger 8" can size comes with drain plug for diesel applications.

This premium marine fuel filter water separator provides maximum protection of your engines by effectively removing water and contaminations from the fuel.

Signal Filters™ N2K head specifications.



- Materials:** 316 Stainless Steel
- Connectors:** NMEA 2000 socket
- Mounting:** Industry Standard Mounting Holes
(compatible with most industry standard heads)
- Filter Size:** 4", 6" and 8"